

The
LEEWAY

1926





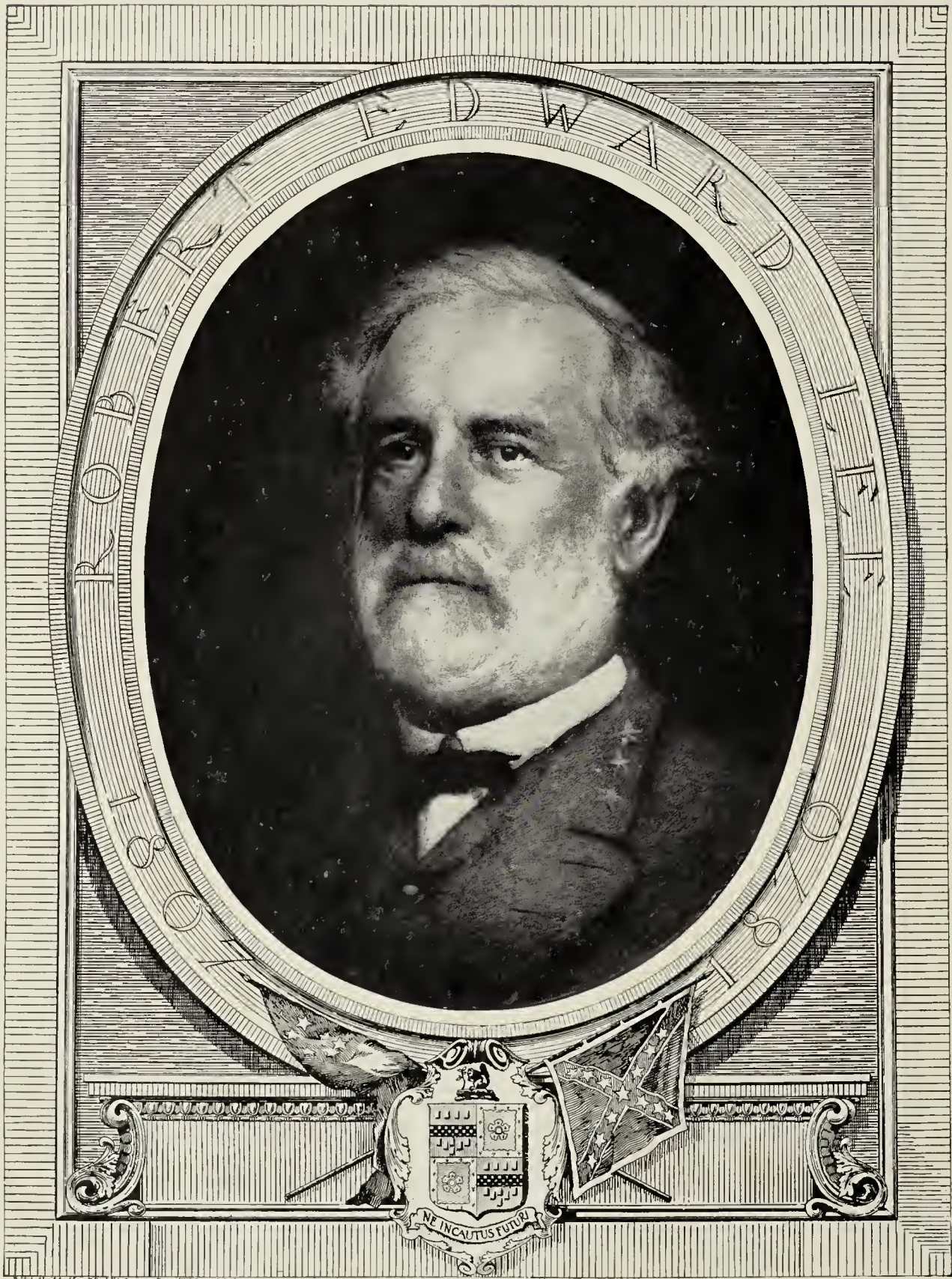
Waynesboro Public Library
Waynesboro, Virginia

The "Memory" 1926
Book D
Mary Pearl Kelly
S.

EX-LIBRIS



1862
A.M.



Published by John L. Smith, 1862, New York, N.Y.

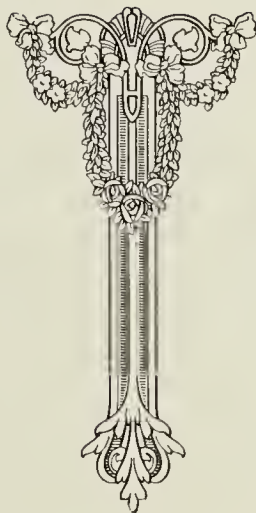
Courtesy Washington and Lee University

373.9755911
L

C.1

THE FIRST ISSUE
of
THE LEEWAY
1926

m. ob. J.
18



STAUNTON PUBLIC LIBRARY

Edited by the Senior Class and Published by
The Record, R. E. Lee High School
Staunton, Virginia

Contents



- I Faculty
- II Classes
- III Organizations
- IV Athletics
- V Jokes and Ads

Foreword



It is with a feeling of pride that we present this, the first issue of THE LEEWAY, to you, kind reader. We are proud that The Record staff of '25-'26 should be the first to publish an Annual at R. E. Lee High, and we hope that between its meager pages the reader will find reflected the true spirit of the White and Blue.

Dedication



We, the class of 1926, dedicate this, the first issue of THE LEEWAY, to one whose kindness and sympathy have endeared her to each of us,

MISS KATE LEE FIFER

THE LEEWAY is dedicated to Miss Fifer in appreciation of her constant guidance and encouragement, which have so greatly aided us in securing the honors and happiness that have come to us during our high school careers. It is to her untiring efforts and kind advice that we owe the publication of this Annual. During our four years here we have learned to look upon her not only as a teacher but as a kind, never-failing friend. It is with a pang of regret that we leave this cherished and beloved friend, but the memory of her shall remain forever fresh with us.



MISS KATE LEE FIFER

Faculty

PROF. L. F. SHELBOURNE
Superintendent

PROF. B. H. SEEKFORD
Principal

STANLEY A. ADAMS
ENGLISH

DOROTHY ASKEW
ENGLISH, HISTORY

SARA W. BELL
HISTORY

H. L. BRIDGES, JR.
SCIENCE

ELSIE J. COLLINS
SCIENCE, MATHEMATICS

MARGARET C. EAKLE
LATIN

VERA L. FETTEROLF
ENGLISH, LATIN

KATE L. FIFER
ENGLISH

ETHEL KYLE
MATHEMATICS

CATHRYN B. LOOMIS
FRENCH, SPANISH

W. T. PUGH
SCIENCE

JACQUELIN RALSTON
MATHEMATICS

AGNES M. STOKES
BIBLE

SUE W. THOMAS
SCIENCE, MATHEMATICS

T. J. YOUNG
ATHLETIC DIRECTOR



The Class of '26

COLORS

Red and White

MOTTO

Post Nubes Sol

FLOWER

Lily of the Valley

OFFICERS

RODES WOODBURY *President*
W. A. GLASGOW *Vice-President*
LOUISE LONG *Secretary*
BESSIE LEWIS *Treasurer*

MEMBERS

HENRY BASTIEN
HELEN BORDEN
WILLIAM BROWN
MARGARET COLLINS
FRANCES CRAWFORD
CATHERINE FISHER
WILLIAM GLASGOW
PAULINE GROSS
BLANCHE HARRIS
MARY H. HARRIS
RUTH HARTMAN
HENRY HARDY
THELMA HULVEY
ATWELL HAINES
ALICIA KIVLIGHAN
THOMAS LARNER

BESSIE LEWIS
LOUISE LONG
CLAIRE LYTTON
MARY MARKLEY
MARTHA MERRIKEN
MARJORIE MOWER
CAMPBELL PANCAKE
JOHN RUTHERFORD
DOROTHY SUTTON
MAY SLUSSER
PALMER STOVER
LOUISE TIMBERLAKE
GEORGE TOWBERMAN
HERMAN WEINBERG
JOHN WHITE
RODES WOODBURY

Hall of Fame

GIRLS

<i>Prettiest</i>	ALICIA KIVLIGHAN
<i>Most Attractive</i>	ALICIA KIVLIGHAN
<i>Most Popular</i>	LOUISE LONG
<i>Sweetest</i>	MARJORIE MOWER
<i>Wittiest</i>	BESSIE LEWIS
<i>Best Athlete</i>	BESSIE LEWIS
<i>Cutest</i>	ALICIA KIVLIGHAN
<i>Best Sport</i>	BESSIE LEWIS
<i>Laziest</i>	PAULINE GROSS
<i>Biggest Flirt</i>	LOUISE LONG
<i>Most Bashful</i>	MARY HELEN HARRIS
<i>Most Studious</i>	THELMA HULVEY
<i>Most Content</i>	MAY SLUSSER
<i>Most Quiet</i>	CATHERINE FISHER
<i>Smartest</i>	LOUISE TIMBERLAKE

BOYS

<i>Handsomest</i>	PALMER STOVER
<i>Most Popular</i>	RODES WOODBERRY
<i>Best All 'Round</i>	ATWELL HAINES
<i>Wittiest</i>	BILLY GLASGOW
<i>Cutest</i>	BILLY GLASGOW
<i>Best Athlete</i>	ATWELL HAINES
<i>Laziest</i>	BILLY GLASGOW
<i>Most Bashful</i>	GEORGE TOWBERMAN
<i>Most Studious</i>	HERMAN WEINBERG
<i>Most Content</i>	WILLIAM BROWN
<i>Most Quiet</i>	GEORGE TOWBERMAN
<i>Most Taetful</i>	ATWELL HAINES
<i>Smartest</i>	HERMAN WEINBERG



HELEN ELIZABETH BORDEN

PHOENIX LITERARY SOCIETY

"A tender heart, a will inflexible."

Helen embodies the dignity (?) of the Senior Class. Her quietness and persistence are sure to carry her far. The best wishes of the Senior Class go with you Helen!



HENRY LOUIS BASSIL BASTIEN, JR.

"IKEY"

PHOENIX LITERARY SOCIETY

"And whereso'er thou move, good luck shall fling her old shoe after."

Sergeant-at-Arms Phoenix Society '24-'25, Assistant Subscription Manager *Record*, Hi Y Club.

"Radio Ike" has caught all the stations from Pinchtown to China on his two-tube "super-iodyne." Henry's there with the "gift o'gab" as well as the school spirit. Ikey claims he's the thirteenth to understand Einstein's Theory. Just the same, it wouldn't be our class if it weren't for Ikey's laugh and optimism.



MARGARET ANN COLLINS

"Wise to resolve and patient to perform."

Margaret is another of the recent additions to our class, but by her good nature she has won an enviable place among us. She has formed about her a large circle of friends and her sweet companionship has been enjoyed by all.



LILLIAN FRANCES CRAWFORD

PHILOMATHEAN LITERARY SOCIETY

"The load becomes light which is cheerfully borne."

If you're looking for a true, dependable friend you don't have to search any farther for we have one in our class—Frances! She never fails with a cheery word when needed, or when called on for assistance of any kind she's right there.



WILLIAM MADISON BROWN

"BILL"

PHOENIX LITERARY SOCIETY

"Speech is great, but silence greater."

Bill deserves a lot of credit for driving five miles each day in all kinds of weather to obtain an education. Bill's corner is the quietest in our 'quiet' room.



CATHERINE BELL FISHER

PHILOMATHEAN LITERARY SOCIETY

"Not much talk—a great, sweet silence."

Catherine is the quietest girl in our class. Handicapped by ill health she has won our admiration by her triumph over it and is at last nearing the coveted goal—the sheep skin.



PAULINE ETTA GROSS

PHOENIX LITERARY SOCIETY

*"Though lost to sight, to memory dear
Thou ever wilt remain."*

Pauline, gentle and refined, goes on her way, ever giving her best. Her sweet smile is welcome to those about her, and her earnest efforts in performing her duties deserve high praise.



WILLIAM ANDERSON GLASGOW

"BILLY"

PHILOMATHEAN LITERARY SOCIETY

*"A little nonsense now and then,
Is relished by the best of men."*

Sergeant-at-Arms Philomathean Society '24-'25, President Philomathean Society '25-'26, Joke Editor *Record* '24-'25, Editor-in-Chief *Record* '25-'26, Editor-in-Chief of first issue of THE LEeway '26, Vice-President of Class '25-'26, Treasurer Hi Y Club '25-'26.

Real wit is a virtue and Billy's is no imitation. Laziness, wit, sportsmanship, literary ability and a good "drag" make Bill a "regular fellow." We are sure that no matter what vocation he may choose he will succeed—for all his good qualities have made him successful as well as popular during his four years with us. To Washington and Lee we send our Billy.



CORA BLANCHE HARRIS

PHOENIX LITERARY SOCIETY

"Nothing endures but personal qualities."

Blanche is one of the steady, dependable members of our class. She is small in size but makes up for it in intellect. May the wonderful optimism (?) of the Senior Class follow you, Blanche, through the highways and byways of life.



EFFIE THELMA HULVEY

PHOENIX LITERARY SOCIETY

*"Character is as high as intellect—
A great soul will be strong to live, as well as to think."*

It is hard to express our appreciation of Thelma—a high standing in her classes and an unusual amount of common sense make her Miss Kinney's "ideal girl"—pure, dependable and unselfish.



HENRY JOHN HARDY

"SOFTY"

PHOENIX LITERARY SOCIETY

"The mildest manner, with the bravest mind."

Assistant Business Manager *Record* '24-'25, Football '24.

"Softy" came to us as a new years gift. We are going to give him a new Ford for a graduation present as he has worn out his old one climbing New Street Hill. May the girls and the gas last!



ALICIA MARIA KIVLIGHAN

"JETA"

PHOENIX LITERARY SOCIETY

*"Blue were her eyes as the fairy flax,
Her cheeks like the dawn of day."*

Secretary Junior Class '24-'25, *Record* Typist '24-'25, School News *Record* '25-'26, Basketball '24-'25, Manager Basketball '25-'26.

"Jeta" is the prettiest, cutest, most attractive member of the class of '26. This combination alone shows what she has meant to our class. She has only been with us for two years but in that time she has done much for the class and the school.

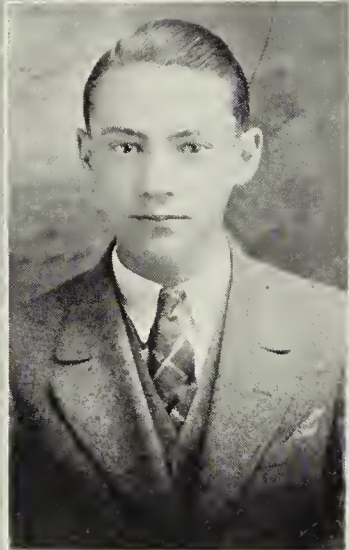


RUTH FRANCES HARTMAN

PHOENIX LITERARY SOCIETY

*"Forward and frolic, glee is here
The will to do, the soul to dare."*

A keen sense of humor, a happy disposition, and a rare ability to get along well with others have gained quite a large collection of friends for Ruth, even though she is only with us during two periods each day. We're expecting great things of you, "Mat Spriggins!"



ATWELL BAILEY HAINES

"Ike"

PHOENIX LITERARY SOCIETY

*"To those who know thee not, no words can paint;
And those that know thee know all words are faint."*

President Phoenix Society '25-'26, President Athletic Association '25-'26, President Hi Y Club '25-'26, Football '24-'25, Basketball '25, Captain Basketball '26, LEEWAY Staff '26.

"Ike" is our best all 'round. Skilled in athletics and faithful to his studies Atwell has gained honor for the school, fame for himself and popularity with us all. He stands high in the estimation of the teachers. We hope that "Bashful Bobbie" makes as many goals in life as he has in football and basketball. The college that gets Ike gets a double blessing.



MARY HELEN HARRIS

PHILOMATHEAN LITERARY SOCIETY

"Thy modesty is a candle to thy merit."

Philomathean Reporter '24-'25, '25-'26.

Mary Helen is the Junior Partner of the Class of '26, but she makes up in friendliness, school-spirit and smartness what she lacks in size and age. She's a government 'officer' and knows how to handle the 'males.' Mary Helen is willing to do anything for anybody, especially her 'shadow' ("Freekles.")



ELEANOR LOUISE LONG

"WEESIE"

PHOENIX LITERARY SOCIETY

*"Ye belle, and ye flirt and ye pert little thing,
Who trip on your frolicsome round,
Pray tell me from whence this impertinence springs
The sexes at once to confound?"*

Treasurer Junior Class '25, Secretary Senior Class '26, LEEWAY Staff '26.

"Weesie" is the sweetheart of the class. Her popularity makes her liked by both boys and girls, but her unconscious flirtations, by the boys. With these and her many other merits, how could "Weesie" help but be a success? Her favorite color is "black" but this does not reflect her disposition.



THOMAS MARVIN LARNER

"TOM"

PHILOMATHEAN LITERARY SOCIETY

"I hold he loves me best who calls me Tom."

Football '25, Baseball '26, Hi Y Club.

"Bashful Tom" is an all 'round good sport. Although he doesn't make himself conspicuous, nevertheless we know that he is there. Even though his French is sometimes neglected, when it comes to cement he knows his stuff.



BESSIE CONWAY LEWIS

"FRECKLES"

PHOENIX LITERARY SOCIETY

"As a wit, if not first, in the very first line."

Basketball '22, '23, '24, '25, Senior Reporter *Record* '25-'26, Treasurer Senior Class '26, LEEWAY Staff '26.

Here you see (or don't see on account of the freckles) our wittiest girl, best athlete and best sport. Bessie's cheerful laugh can be heard any time, any place rain or shine. Freckles is the most optimistic member of our optimistic class.



CLAIRE VIRGINIA LYTTON

PHILOMATHEAN LITERARY SOCIETY

*"A daughter of the gods,
Divinely tall and most divinely fair."*

Basketball '24-'25, Alumni News Record '25-'26, Secretary Philomathean Literary Society '25-'26.

Claire is one of the most sociable members of our class, liked as much by the faculty as the rest of us. Because she is a typical flapper she filled the rôle as "Flapper Grandmother," in our class play quite creditably. As a bacteriologist she is destined to startle the scientific world.

CAMPBELL PANCAKE, JR.

"PONTO"

PHOENIX LITERARY SOCIETY

"Blushing is the color of merit."

Sargeant-at-Arms Phoenix Society '25-'26, Football '25, Basketball '25-'26, Hi Y Club.

"Ponto" has made good use of his drag all during his high school career. His musical voice and rosy cheeks have made him the latest sheik at M. B. S. Campbell's good humor has made him one of the best liked boys in our class.

MARY DORE MARKLEY

PHILOMATHEAN LITERARY SOCIETY

*"The reason firm, the temperate will,
Endurance, foresight, strength and skill."*

No matter how cold the weather, or how long her walk to school may be, Mary's serene disposition is never disturbed. She must be known to be appreciated. Mary is a typical school girl and a famous artist of the "geometric figure."



MARJORIE LOCKRIDGE MOWER

PHOENIX LITERARY SOCIETY

*"Her ivory hands on the ivory keys
Strayed in a fitful fantasy."*

Phoenix Reporter '24-'25.

Marjorie's sweet disposition is one of the shining lights of our class. Her dignity, reserve, and musical ability form an unusual and charming combination of which any one might be proud. We are sure that success will come to Marjorie as easily in life as it has in school.



HERMAN WEINBERG

"WEENIE"

PHILOMATHEAN LITERARY SOCIETY

*"Praise from a friend, or censure from a foe,
Are lost on hearers that their merits know."*

Sophomore Reporter *Record* '23-'24, Assistant Business Manager *Record* '25-'26, Parliamentary Critic Philomathean Society '25-'26, Vice-President Junior Class '24-'25, Recipient D. A. R. Award '25, Associate Editor *LEEWAY* '26.

Herman has taken an active part in all phases of school life. His executive ability and business sense have made him indispensable to the Blue and White.

Not only is he the smartest boy in our class but his ability extends far beyond the realms of "book sense." He will not be easily forgotten as he was the originator of the name of our first annual, *THE LEEWAY*.



DOROTHY ELLEN SUTTON

"Dot"

PHILOMATHEAN LITERARY SOCIETY

*"For she was jes the quiet kind
Whose natures never vary,
Like streams that keep a summer mind
Snow-hid in Jenooary."*

"Dot" is so quiet and unassuming that it is hard to characterize her. We do know, however, that the corner of the room where "Dot" is has a brighter look. She is full of fun and her favorite pastime is asking conundrums. Her good nature will carry her far.



MARTHA STUART MERRIKEN

"TISHIE"

PHOENIX LITERARY SOCIETY

*"Her very frowns are fairer far
Than smiles of other maidens are."*

Class salutatorian.

"Tishie" combines a happy disposition with an active mind in her school work. She is one of the best dressed girls in our class. Martha stands high in all of her classes and has quite a drag with one of the male members of the faculty.



JOHN EDWARD RUTHERFORD

"PREACHER"

*"Worth, courage, honor, these indeed
Your sustenance and birthright are."*

John gets letters in all languages, and it is a great trial to him to have to find someone to translate them to him. His hobbies are girls and Fords. We surrender our "Preacher" to V. P. I. May his crops be as successful as he has been.



INDIA MAY SLUSSER

PHOENIX LITERARY SOCIETY

*"So mild, so merciful, so strong, so good—
So patient, peaceful, loyal, loving, pure."*

Although May is extremely quiet she is one of the dependable members of the class. She is always willing to oblige anyone and we are sure she will carve her niche in the world in spite of her modesty.



JAMES PALMER STOVER

PHOENIX LITERARY SOCIETY

*"Who can foretell for what high cause
This darling of the gods was born?"*

Football '24, Hi Y Club.

Palmer is the Beau Brummel of the Senior Class. As Shakespeare or somebody said—Contented with his "Lot" he is not "Abel" to raise "Cain." With Palmer go our best wishes for a successful future.



MARY LOUISE TIMBERLAKE

"WEESE"

PHOENIX LITERARY SOCIETY

*"O, could you view the melody
Of every grace,
And music of her face."*

Exchange Editor *Record* '25-'26, LEEWAY Staff, Class Valedictorian.

"Weese" has gone blissfully through her four years of high school and captured the highest marks in all her classes. It must be truthfully said, however, that along with her smartness she hasn't for a minute lost her popularity, especially with the opposite sex. She has the rare combination of good looks and intelligence and we value her as one of the best treasures of the class of '26.



GEORGE WILLIAM TOWBERMAN

PHOENIX LITERARY SOCIETY

"On their own merits modest men are dumb."

George is our quietest and most bashful boy. He not only succeeds in his studies but he can always be counted on to do his part in all other activities.

Good luck, George.



JOHN MAXWELL WHITE

"WHITEY"

"The man that loves and laughs must sure do well."

Football '25, Basketball '25-'26, Baseball '26, Hi Y Club.

John is a newcomer into our midst this year, but he has already won a secure place in the hearts of his fellow classmates. John's musical laugh is well known all over S. H. S. With sorrow we bid K. W.'s cave-man goodbye!



RODES WOODBURY

"WOODY"

PHOENIX LITERARY SOCIETY

*"Some shout him, and some hang upon his car
To gaze in his eyes and bless him."*

President Junior Class '25, President Senior Class '26.

"Woody's" popularity has made him president of two classes, while his continual good humor and cleverness have constantly added to his popularity. "Rastus" is a good friend of both classmates and faculty.

"Class Kirby"



Class Poem

BESSIE LEWIS, '26

The prize, graduation, is ours, Seniors,
The reward of our high school career—
The goal toward which we've been striving
Is reached amid glamour and cheer.

We've worked and we've studied together,
And hard it is for us all—
To leave old friends and companions,
Not to meet again in the Fall.

May those who will follow our pathway
Find something noble and grand,
That will make their achievements simpler,
Of the things that we had planned.

There is one great debt we find we owe,
It will be with us day by day,
And that is to the Faculty, who
Have paved our triumphant way.

To the teachers and the students, too,
Our final gift will be
The new and splendid building—
Our future R. E. Lee!

Fond Memory will brighten the future,
And time will more firmly fix
The great and glorious history
Of the Class of '26!

And now, our parting is final,
Our studious course is run,
And if "blue"—we've but to remember
That, "After the clouds, the sun."

Salutatory



RIENDS, teachers, patrons and fellow students of Robert E. Lee High School, it is a great pleasure and privilege to have you present and to welcome you on behalf of the High School and the class of '26.

While because of the matchless activities of Mother Nature under our Baldwin Street school building, we have not in the session now closing had a "local habitation," yet we have none the less had a "name." Neither our enthusiasm, our effort nor our activities have been diminished. We hope that our teachers have not found any curtailment of our work or inferiority in our attainments.

We very greatly envy our successors in the coming enjoyment of the splendid edifice now far on the way to completion as the capstone of the public school system of Staunton. They will work amid the perfect equipment and adequate facilities of that magnificent building which cannot fail to conduce to uninterrupted and effective study and the comfort of its physical conditions will, without doubt, tend to help the teachers also in imparting their knowledge to the students.

We regret very much that on account of the continuing unfavorable working conditions we have been able to do no more than that which is presented to you in our program this evening, but what we do exhibit is, I feel sure, a matter of great pride to each member of the graduating class and the real results are no less in the acquisition of knowledge, mental improvement and character building.

Some of us may plunge at once into the serious and exacting world work; some of us will no doubt be so fortunate as to continue our studies in the higher and more advanced branches of learning. Whatever may be our lot I know none will forget the happy associations of the class of '26. I bespeak for the whole class a happy, full, and successful future.

Class of 1926, I salute you and for you give most hearty and sincere welcome to our friends who are present.

—MARTHA MERRIKEN.

Class Prophecy



IT HAD been the greenest of all valleys through which Divineresse had been traveling. The heat of the day and the never ending lines of trees and the ever stretching velvety grass were beginning to weary the brain of an already weary traveler. Moreover, Divineresse, due to the purity of the surrounding air was now beginning to see mirages. And this was the reason that he rolled up his coat into a pillow and lay his head upon it, under the shade of a paspareil tree.

Just as the traveler closed his eyes something touched him. He jumped up and looked all around but could see nothing. As he was about to lay his head back upon his pillow, however, he saw a little figure about a foot high standing beside his folded coat. In his hand the little fellow held a chalice almost as large as himself. Parenthesis (for this was the little fellow's name) calmly regarded the man so much larger than himself and said in a piping voice, "Men enter this valley but never leave it. 'Tis the Valley of Shadows over which Queen Fantasia reigns. But before thou diest, we grant thee one wish. What shall it be?"

Divineresse's head drooped, but only for a second, and then he jumped up with a start. "I wish," he said in a quavering voice, "I wish, I wish to be taken out of the valley alive."

The dwarf turned livid with rage. "Beast," he said, "dost thou think thou canst escape me? For that wish thou shalt remain here to die. Dost thou hear me, fool? To die."

In his fury Parenthesis dashed the chalice to the ground, and instantly a shining object sprang up from where it fell. As Divineresse gazed he saw that the object was a mirror composed of numerous parts in the shapes of triangles, rectangles, circles, polygons, and many other geometrical figures.

"And for that wish also thou shalt be made to suffer. While thou sittest in torment thou shalt view the happiness of others; the happiness that might have been thine hadst thou not entered this valley. This place is enchanted; thou canst not move from it. From here you must view what real happiness means, the happiness of the Class of '26, passed on but not forgotten. Each of these figures reflects the bliss of some member of that beloved class. Thou canst not move on, thou—must—look—upon—it!"

There was nothing else for Divineresse to do but look into a small triangle on the left side of the mirror. It reflected a small girl taking the part of "Topsy" in "Uncle Tom's Cabin." This was the famous diminutive actress of negro

parts, Blanche Harris. The next figure was a rectangle. In it were seen a physical instructor, Bessie Lewis, and her assistant, Mary Helen Harris—still together as always. In the third figure was seen Dr. Henry Bastien, performing one of the most difficult of operations. In a circle there was a large, modern building, the new R. E. Lee High School, in which both Frances Crawford and Dorothy Sutton were capable members of the faculty.

Next the scene shifted to a farmer's convention at which John Rutherford and William Brown, two progressive farmers were the principal speakers of the afternoon. There was reflected from a square a young pianist executing skillfully arpeggios and runs with the dexterity of a master. This fair damsel was none other than Marjorie Mower. In a hexagon near the center was seen Herman Weinberg, M. D., Ph. D., Ll. D., and his staff of renowned nurses, Margaret Collins, Mary Markley, Helen Borden, and Thelma Hulvey, each of whom was invaluable to the Western State Hospital. The next figure showed a graceful girl, Alicia Kivlighan, the première star in the Beverley Street hit, "Gnat."

The scene changed and became the studio of the well known designer, Mlle. Louise Long, using as her model, Martha Merriken. The next revealed the offices of Mat and Andrew Spriggins, attorneys-at-law, otherwise known as Ruth Hartman and Billy Glasgow. In another section was perceived Atwell Haines, president of the International Athletic Council.

Claire Lytton was next seen in her laboratory, testing the "Houff" germ, the cause of a peculiar kind of heart disease. The mirror following portrayed a bill board announcing the coming of Keith's Vaudeville, featuring John White and Campbell Pancake, the world's most celebrated strong men. The adjoining figure depicted George Towberman at his newsstand reading a review by the Critic, Rodes Woodbury, of Palmer Stover's latest book, "Love Letters of a Collegiate Papa." On the other side of this was seen Henry Hardy, the first night watchman at M. B. C., to use a "Leaping Lena" to chase prowlers off the property.

In an oval was seen Mary Louise Timberlake, head of the Matrimonial Correspondence School, seated at her desk reading the applications of both sexes for mates. The adjacent figure disclosed Pauline Gross's happy marriage in the "Smoky City." In the last figure Thomas Larner was shown, happy in having procured the contract for the erection of a new settlement house which was made possible by the diligence of Catherine Fisher and May Slusser, social workers.

As the last picture faded away Divineresse's head fell upon his breast and he was dead.

Last Will and Testament of the Class of '26



E, THE unappreciated, unadmired, and unlucky Seniors of the Class of '26, being of sound bodies and weak minds, and being perfectly willing to vacate our places in this life to the gay and youthful Juniors, do make, declare, and publish this, our last and only will and testament, hereby revoking all previous wills made by us at any time, so that our valuable property may be rightfully disposed of.

First, to Professor L. F. Shelburne, another Senior Class as "illustrious, dignified, and noble" as we.

ITEM: To Professor B. H. Seekford, a pair of non-breakable "specs" to be worn on the yard in snowy weather.

ITEM: To the Juniors, our privileges of which we were deprived during the session 1925-1926.

ITEM: To the Sophomores, our unconquerable habit of coming to class without having opened a book.

ITEM: To the Freshmen, our flood of failure blanks at the end of every three weeks.

ITEM: To Miss Eakle, a livery stable large enough to house all the confiscated Latin ponies.

ITEM: To Miss Fifer, a large picture of Hans Christian Anderson, to be hung above her desk.

ITEM: To Miss Sara Bell, Claire Lytton's height, to enable her to talk face to face with Lawrence Peyton and other six-footers in her classes.

ITEM: To the other members of the faculty, fond memories of dear old R. E. Lee and of Staunton.

ITEM: To Catherine Wayt, Bessie Lewis' extra supply of freckles.

ITEM: To Katherine Roller, Louise Long's flirtatiousness.

ITEM: To Beverley Shultz, Herman Weinberg's pitching ability (?)

ITEM: To Rosalie Grove, Marjorie Mower's sweet disposition.

ITEM: To Billy Hamilton, Atwell Haine's athletic ability.

ITEM: To Meredith Sillings, Palmer Stover's popularity with the girls.

ITEM: To Graham Suter, Henry Bastein's boisterous voice.

ITEM: To Via Clifton, Martha Merriken leaves her lip-stick, paint, and curling irons.

ITEM: To Beverley Stoddard, Louise Timberlake's Charleston ability.

ITEM: To "Scrub" Riley, William Brown's quiet disposition.

ITEM: To "Cincinnati" Grim, "Preacher" Rutherford's unused razor.

ITEM : To John Butler, Rodes Woodbury's (in)complete knowledge of parliamentary law.

ITEM : To Rev. Walker Cleveland, a new set of revival songs.

ITEM : To Katharine Stephens, Campbell Pancake bequeaths his becoming blush.

ITEM : To Garnett Philippi, John White's musical laugh.

ITEM : To Sarah George Harris, Pauline "*Etta Gross*" leaves her enormous appetite.

ITEM : To Margaret Lee, Helen Borden's musical ability.

ITEM : To Mary McCue, Blanche Harris' reading ability.

ITEM : To Louise Shiflett, Ruth Hartman mournfully leaves her extra supply of cadets.

ITEM : To Susie Gibson, Alicia Kivlighan's school spirit.

ITEM : To Professor Edwin Investigator Werner, Henry Hardy leaves his prized possession, "Leaping Lena." Prof. Werner is instructed to buy four new tires before attempting the trip to Lexington.

ITEMS To Louise Brown, May Slusser's permanent wave.

ITEM : To Grace Wymer, Mary Helen Harris' bashfulness.

ITEM : To Sue Kennedy, George Towberman's studiousness.

ITEM : To Esther Shaffer, Catherine Fisher's friendliness.

ITEM : To Edward Kinney, Frances Crawford's contentedness.

ITEM : To Coach Young, an enthusiastic and effective baseball manager for the season of '27.

ITEM : To George Earman, Billy Glasgow's faculty of making, and keeping, friends.

ITEM : To "Bus" Weller, Thomas Larner's French vocabulary, to be used in translating certain mysterious messages in his daily letters.

ITEM : To Jean Long, Thelma Hulvey's ability to swim (on an inner-tube).

ITEM : To Frances Radcliffe, Dorothy Sutton's supply of riddles and conundrums.

Witness our hand and seal this ninth day of June, in the year of our Lord one thousand, nine hundred twenty-six.

SARAH W. BELL,
Shadow of the Shade of Dodo.

Valedictory



WE, THE Class of 1926, have reached the saddest point in our high school career. This is the end and yet it is but a beginning. We must bid farewell to all the familiar scenes and to our classmates and greet the realistic world.

As we stand on the threshold, about to enter upon our new life, we realize fully for the first time what old Staunton Hi has meant to us. As we recall our pleasures, our sorrows, and our struggles, we are inspired by the courage, devotion, and loyalty with which we have always overcome the worst difficulties and stood together. How can we ever express to the members of the faculty our deep appreciation of the help and encouragement that they have given us on every occasion? Words are a poor medium at a time like this, but as they watch our future deeds and actions they will see how the influence and inspiration of their high ideals and noble principles have guided our course through the rugged channels of life.

As we look forward into the dim mist of the future, there arise new hardships and obstacles, but with the strength, knowledge, and self-reliance that we have acquired here, we shall go eagerly forward, confident of always being victorious.

And now, classmates, we must part. Deep down in our hearts there is hidden a sadness, but there is also a feeling of elation at the achievement of success, on this, our Graduation Day. May this prove an incentive to a higher and fuller preparation of ourselves for our future places in life. And, if perchance we seek in vain the lofty heights to which we aspire, let us remember that "they also serve who only stand and wait."

—MARY LOUISE TIMBERLAKE.

Junior Class

OFFICERS

JOHN BUTLER*President*
MALCOLM WELLER*Vice-President*
ALDON STOGDALE*Secretary-Treasurer*

MEMBERS

RICHARD COLLINS
MARVIN ARMSTRONG
HARRY BAYLOR
DORRANCE GRAHAM
FRED HENRY
EDWARD KINNEY
BARRON LEE
BONNY SPECTOR
EDWIN WERNER
LEONARD GLOVER
NORMAN POTTS
JOHN BROWN
JAMES CERANTONIO
MAXWELL GOODLOE
BEVERLEY SHULTZ
HAL WILSON
WILLIAM CAMPFIELD
GARNETTE PHILLIPE
GRAHAM SUITOR
CLARENCE HARPER
CARLYSLE NEFF
CHARLES BLACKLEY
BERNARD BROWN
HARRY MUSSER
GEORGE WALTERS
MARSHALL FRY
BILLY GRIM
FRANCES RILEY
KENNETH BRADFORD
LAWRENCE PEYTON
HOWARD GRIM
ELWOOD STOVER
JOHN STODDARD
GEO. EARMAN
THOS. HOGSHEAD
ROBERT KNOWLES
FRANK LASLEY
FRANCIS LINEWEAVER

KATHERINE WAYT
NELLIE WERNER
FLORENE COLLINS
ANNABEL THOMPSON
LILLIAN BELL
ELIZABETH BROCKENBROUGH
JESSE WARREN BROWN
VIRGINIA DEIHL
MARGARET LEE
INA MACKEY
THELMA MARKELEY
JOSEPHINE MARSHALL
KATHERIN MACALEER
CLORINDA PEDUTO
KATHERINE ROLLER
ANNIE SILLING
BEVERLEY STODDARD
FREDA WEINBERG
MARY ARTHUR CLINE
ISABEL ELLIOT
MARY SUE ROUDABUSH
AUGUSTA HARMAN
VIA CLIFTON
CATHERINE SHIFFLETT
MARGARET MORAN
ELIZABETH WILSON
RACHEL COINER
BERNICE COHEN
VIRGINIA HOGSHEAD
ELEANOR HOOK
MARY SUE KENNEDY
CATHERINE COINER
ANN LACKEY
LUCILLE MCCORCKLE
VIRGINIA TAYLOR
REGINIA BERGIN
MARY MITCHELL
BLANCHE PUFFENBARGER

FRANCES RADCLIFFE
JOSEPHINE SMITH
HELEN SNITEMAN
GRACE WYMER
EVELYN WHITLOCK
ISABEL WALTERS
BEVERLEY BENDER

Junior Hall of Fame

GIRLS

<i>Prettiest</i>	KATHARINE WAYT
<i>Most Popular</i>	KATHARINE WAYT
<i>Cutest</i>	KATHARINE WAYT
<i>Most Studious</i>	FREDA WEINBERG
<i>Best All 'Round</i>	KATHARINE WAYT
<i>Best Dancer</i>	KATHARINE WAYT
<i>Laziest</i>	SUE KENNEDY
<i>Best Drag</i>	KATHARINE ROLLER
<i>Smartest</i>	ANNIE SILLINGS
<i>Biggest Flirt</i>	KATHERINE STEPHENS
<i>Biggest Eater</i>	KATHERINE KOINER

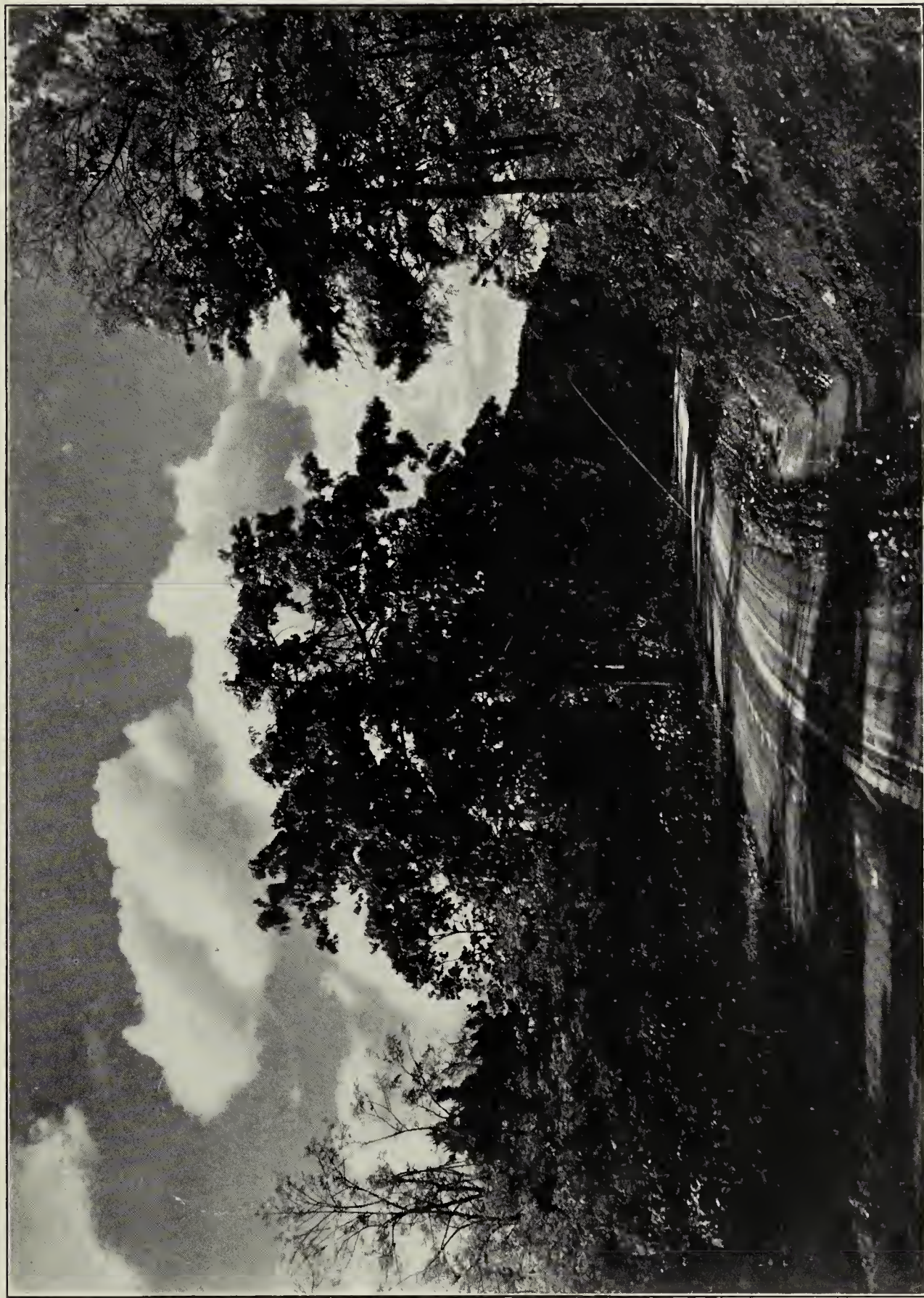
BOYS

<i>Best Looking</i>	JOHN BUTLER
<i>Most Popular</i>	LEONARD GLOVER
<i>Best Athlete</i>	MALCOLM WELLER
<i>Most Studious</i>	HARRY BAYLOR
<i>Best Dressed</i>	KENNETH BRADFORD
<i>Best Dancer</i>	MARVIN ARMSTRONG
<i>Best All 'Round</i>	MALCOLM WELLER
<i>Man Who Has Done Most for S. H. S. '25-'26</i>	LEONARD GLOVER
<i>Laziest</i>	BONNY SPECTOR
<i>Best Drag</i>	CARLISLE NEFF
<i>Smartest</i>	HARRY BAYLOR
<i>Biggest Flirt</i>	MARVIN ARMSTRONG
<i>Biggest Eater</i>	MARVIN ARMSTRONG
<i>Mexican Athlete</i>	MARVIN ARMSTRONG

"Chick", is some artist



IN OUR OWN GYPSY HILL PARK



ON THE ROAD TO MONTEREY

Lover's Lane *GF*

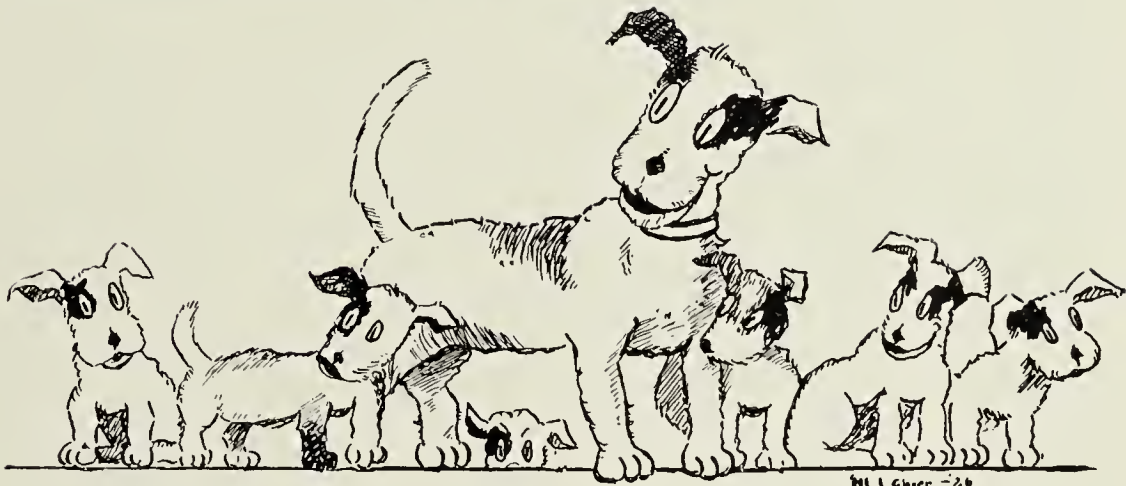
The White and Blue

Take me once more to Old Staunton High
Nestling down in the Shenandoah;
Loyal and true to the White and Blue
We'll raise this song there once more—

So we will rally around the old school
Lest it should know defeat;
With each attempt to conquer,
A victory we'll meet (yell: so fight hard)

We'll firmly stand together
A band of students true,
Loyal to Staunton High School
And to the White and Blue.

Student body of "Lee Hi"



THE ORGANIZATIONS

The Flapper Grandmother

Presented at the Beverley Theatre, December 18th

DRAMATIS PERSONÆ

Maggie Pepper (<i>The Flapper Grandmother</i>)	MISS CLAIRE LYTTON
Andrew Spriggins	MR. WILLIAM GLASGOW
Mat Spriggins	MISS RUTH HARTMAN
Lena Spriggins	MISS KATHERINE STEPHENS
Belindy Spriggins	MISS FLORENE COLLINS
Dr. Thomas Joy	MR. JOHN WHITE
Jimmy Swift	MR. FRANCIS RILEY
Dick Tate	MR. FRANCIS LINEWEAVER
Count Seekum Rich	MR. HERMAN WEINBERG
Rastus	MR. RODES WOODBURY
Lilly White	MR. JOHN BUTLER
Elf	MISS ALICIA KIVLIGHAN
Edith	MISS DOROTHY APGAR

Flappers, Jelly Beans, Rag Dolls, Door Knobs and Matrons



"THE FLAPPER GRANDMOTHER" CAST



Record Staff

WILLIAM A. GLASGOW	<i>Editor-in-Chief</i>
HOWARD P. GRIM	<i>Associate Editor</i>
JOHN O. BUTLER	<i>Business Manager</i>
LEONARD GLOVER	<i>Subscription Manager</i>
ALICIA M. KIVLIGHAN	<i>School News</i>
CLAIRE LYTTON	<i>Alumni News</i>
*BEVERLEY SHULTZ	<i>Boys Athletics</i>
KATHARINE STEPHENS	<i>Girls Athletics</i>
LOUISE TIMBERLAKE	<i>Exchanges</i>
*BERNARD RHEA	<i>Jokes</i>
BESSIE LEWIS	<i>Senior Reporter</i>
BARRON LEE	<i>Junior Reporter</i>
RUDOLPH BUMGARDNER	<i>Sophomore Reporter</i>
ALLEN AYRES	<i>Freshman Reporter</i>
MARVIN ARMSTRONG	<i>Collector of Miscellaneous</i>
VIRGINIA TAYLOR	<i>Typist</i>
ALDON STOGDALE	<i>Assistant Business Manager</i>
HERMAN WEINBERG	<i>Assistant Business Manager</i>
HARRY BAYLOR	<i>Assistant Subscription Manager</i>
HENRY BASTIEN	<i>Assistant Subscription Manager</i>
MISS KATE L. FIFER	<i>Faculty Adviser</i>

*Also for THE LEEWAY

Senior Editorial Staff of the Leeway

W. A. GLASGOW.....*Editor-in-Chief*

HERMAN WEINBERG.....*Assistant Editor*

PICTURE COMMITTEE

LOUISE LONG

LOUISE TIMBERLAKE

BESSIE LEWIS

ATWELL HAINES

WILL COMMITTEE

MARY HELEN HARRIS

THOMAS LARNER

THELMA HULVEY

HENRY BASTIEN



Hi-Y Club

OFFICERS 1925-'26

L. F. REICHARD *Chairman Advisory Council*
ATWELL HAINES *President*
JOHN BUTLER *Vice-President*
LEONARD GLOVER *Secretary*
WILLIAM GLASGOW *Treasurer*

OFFICERS 1926-'27

LEONARD GLOVER *Pres'*
FRANCIS LINEWEAVER *Vice-Presu*
GEORGE EARMAN *Secretary*
RUDOLPH BUMGARDNER *Treasurer*

MEMBERS

HENRY BASTIEN
RICHARD BELL
CHARLES BLACKLEY
BERNARD BROWN
RUDOLPH BUMGARDNER
JOHN BUTLER
GEORGE EARMAN
LEONARD GLOVER
WILLIAM GLASGOW
HARRY GREER
ATWELL HAINES

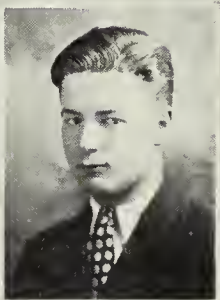
EDWARD KINNEY
CLARK KIRBY
THOMAS LARNER
FRANK LASLEY
FRANCIS LINEWEAVER
WILLIAM MOFFAT
DONALD MOWER
CAMPBELL PANCAKE
ALDON STOGDALE
PALMER STOVER
MALCOLM WELLER

JOHN WHITE

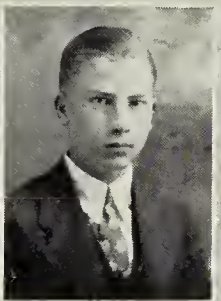


Suey

Franky "Pete"



"7-5"
♀
"Pembles"



Handwritten notes below the bottom row of portraits.

Dick

The Staunton Hi-Y Club



WITH the closing of school in June the Hi-Y Club will have concluded its second year. Many students will not realize it is two years old as we have not tried to advertise the club, hoping that we would become known more by our deeds than our words. If what we do does not speak loud enough to be heard we prefer to be unknown.

The purpose of the club is to get back of every good thing in the school and fight those things, of which we are not proud. We believe each student has an obligation to leave the school better than he found it and we are banded together that we may be more effective.

Any Junior or Senior has been eligible who could persuade the members of the club of his desire to live up to its standards. There has been no element of snobbishness in the restricted membership. The club has had a work to do which it could not do unless its members were in harmony with its principles.

The Hi-Y could not succeed by itself. Without the hearty response of the student body there is little the Hi-Y Club could do. It has been the interest of the rest of the school that has given us a chance to be effective. We have discussed problems and made plans but the interest of the student body has put it over.

Of course there is the individual personal good we get out of it in our regular meeting. We have had a number of interesting speakers before us and we have had profitable discussions. We have had Bible Study and conferences. No one can attend the "bean suppers" week after week and not feel the challenge for doing better and bigger things. However if the club was just for our own sakes, it would become selfish and lose its appeal.

Reed J.

S. M. A.



Miss

MISS VIRGINIA TAYLOR

Winner of the Annual Beauty Contest Conducted By *The Record*—1926

Sept. 1916-27

Ruby Rose

John =

Le Cameron



Chick

most interesting

Just a good old

John's and wife

John's

A. W. Williams

John's

THINGS IN GENERAL



ATHLETICS



G. RHEA



FOOTBALL SQUAD

Football

(From the January issue of *The Record*)



WITH a victory over Clifton Forge High School, the team of Twenty-five closed one of the greatest seasons in the history of Lee High School.

The team, composed of Captain Weller, Haines, Lineweaver, F., Armstrong, White, Stover, Baylor, Pancake, Kirby, Lineweaver, R., and Jordan, is one that will long be remembered by the followers of the Blue and White. Not all the laurels, however, can be thrown to these men, who bore the brunt of the fight on the field, but some must be showered on Coach Young, who developed a team of fighting chargers from a handful of green material.

In electing an all Shenandoah Valley High School eleven the Winchester Star honored S. H. S. by placing three men on the first team: Weller, half-back; White, center; and Lineweaver, F., tackle; and by giving a berth to half-back Armstrong and to Stover, who is an admirable tackle, on Shenandoah's second best.

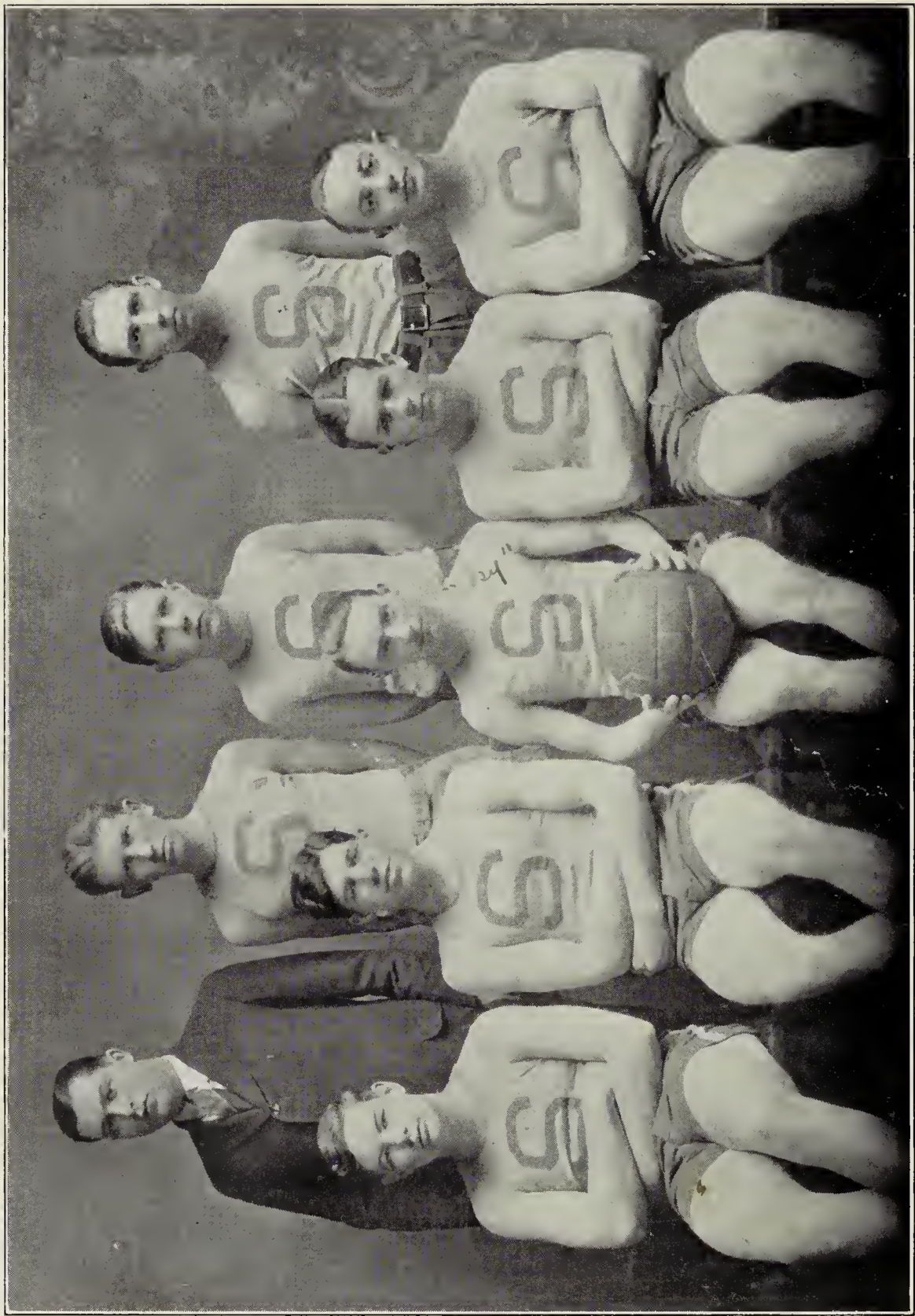
The students should be proud of Staunton High's '25 varsity eleven, a team that defeated the Virginia School for the Deaf by a score of 20-2, and downed Clifton Forge to the tune of 12-0. A team that held Charlottesville High to a scoreless tie, thereby raising its rating equal to that of the U. Va. Freshmen, and Fishburne Military School. Other memorable games are those with Lexington High and Handley. The first resulted in another scoreless tie. This was played in a sea of mud in which an offensive game was impossible as well as impractical.

In the Handley game we were handicapped, playing without Weller, Stogdale, F. Lineweaver and Stover. The absence of these kept our smooth running machine from progressing as well as it should. We do not offer this as an excuse for not scoring, but we feel proud of the team that kept Handley, who outweighed us ten pounds to the man, from crossing our line.

We have so far considered our season through the eyes of an optimist taking the glorious side of our grid season. It would have been a season of overwhelming success but for one game, that with our ancient rivals, the White and Blue warriors from Harrisonburg, who slew the gridiron heroes of Lee High to the tune of 18-0. This team upholding the banner in a true sportsmanlike manner ran around our ends for the only touchdowns scored by our opponents during '25 season. For this stinging defeat we do not and cannot offer excuses, the second ever administered by our rivals of northern Shenandoah, but we can say we were at a disadvantage playing with four substitutes all through the game and six part of the game.

The climax of the season came on December 4th when the football men were the guests of honor at a banquet given by the Hi-Y Club. Tickets were sold to students and a great evening was enjoyed by those who took advantage of the first athletic event of the kind ever held by the local Hi-Y organization. Coach Young took this opportunity to give monograms to those who had upheld the standards of S. H. S. on the grid-iron. The following received letters: Captain Weller, fullback; Haines, quarterback; Armstrong, fullback; Lineweaver, R., halfback; Kirby, halfback; Lineweaver, F., tackle and halfback; Jordon, end; Stogdale, end; Goodloe, end; Baylor, guard; Pancake, guard; Butter, guard; Stover, tackle; Cerantonio, tackle; Larner, tackle; White, center; Grim, manager.

With the election of Armstrong as captain of the twenty-six team, the greatest of the outdoor sports gave way to the king of the sporting world for the winter season, basketball.



BASKETBALL SQUAD

Basketball

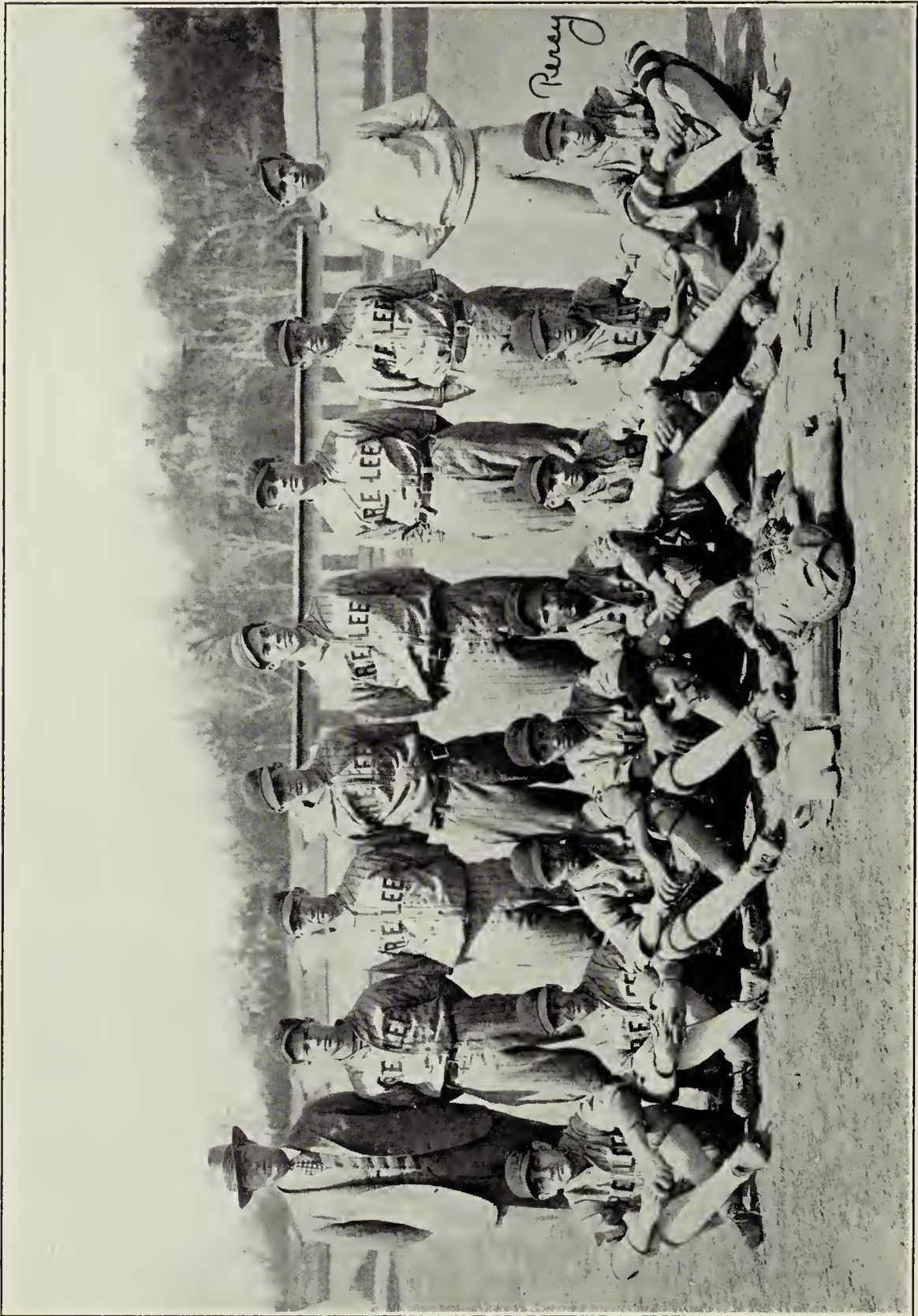
(From the March issue of THE RECORD)



ALTHOUGH the Lee High basketeers have not completed their '26 schedule, we believe that we can acclaim the season a "brilliant success." Starting the season with a few preliminary games during Christmas holidays, Lee lost the first cage engagement to the Staunton A. M. A. boys by the score of 34 to 26. But this did not dishearten Coach Young's warriors; they came back strong and handed the Alumni team, composed of former stars of Lee high, the small end of a 20-18 score. In the other preliminary game we shared not so well, falling at the hands of the strong Y. M. C. A. Senior outfit by a 28-22 count.

On January 9th we opened our season with an easy win over Lexington High School. This being the first high school game, the big end of a 37-6 score was very encouraging to the locals. On the following Tuesday, January 13th, a game which will long be remembered by the backers of the Blue and White five, was played. Fishburne Military School being met, on their own gym, and after a hard fought game were defeated by the Lee tossers 28-23. To date this is the only game Fishburne has lost. Our next opponent was Staunton Military Academy, who handed us the little end of a 42-45 count on their gym at 2:00 o'clock. At eight o'clock the Beverley Manor cagemen, who were runners up for the County championship, were defeated by the over-whelming score of 44-22, Coach Young using all men, both the first and second team. On the twenty-second we drew a forfeit from Shenandoah High, as they were unable to play because of the lack of a gym. The following Tuesday we journeyed to Bridgewater where we fell before the onslaught of the district leaders, Bridgewater High 35-17. The greatest game of the season was seen January 29th on the local court, when the court team from Lane High of Charlottesville met the Lee basketeers in a spirited battle which ended in a 28-24 defeat for our ancient rivals. The next day we journeyed to Front Royal and again tasted defeat, this time from the strong Randolph-Macon team, to the score of 44-11. This seemed very discouraging, but the following Friday we avenged out football defeat of the fall by snowing under the quint from Harrisonburg High 49-13. The following day the Lee team out-classed the Shenandoah College team and won an easy game by a 41-27 count. The next week we played four games. Due to lack of practice, too many games, the excellent playing ability of our opponents, and in some games the poor officiating of the referee, we dropped all four. On Tuesday, February 9th, we fell before the fast Blue and White team from Augusta Military Academy by a 32-18 score. Following this defeat we journeyed to Waynesboro, Friday, February 12th and received the small end of a 25-24 score. In this game the absence of Captain Haines was keenly felt. The following day we journeyed to Winchester where we met the strong Shenandoah Valley quint at 3:30 and fell before this swift outfit by a 30-21 score. At 8:30 the Handley five was met and again we came out with the small end. This time we only registered 15 points while our opponents were ringing up 20.

Throughout these games Coach Young has been using the following line-ups: Haines, Jordan and Lineweaver, F., forwards; White, Brown and Shultz, center; Stogdale, Armstrong, Pancake, and Weller, guards.



BASEBALL SQUAD

Baseball



AS THE baseball season has just started we cannot say much in regard to it. To date the team has played only four games. Coach Young is greatly handicapped because of the lack of experienced men. Of the forty candidates that reported for practice only four were letter men. Baseball is a game which takes years to learn, so, with such a fresh group of men we cannot expect the best this year, but we have high hopes for next season.

In the games played the team has shown good fight, and we believe it will come out on top in the end.

Coach Young has been using the following men in the games played:

Haines and Weller, catchers; Roby, Lineweaver, Harper, and Shultz, pitchers; Waide and Huff; first base; Bradford and Brown, second base; Kirby and Ayres, shortstop; Lineweaver and Weller, third base; White, Wilson, Brown, Goodloe, outfielders.



Athletic Association

ATWELL HAINES*President*

PROF. B. H. SEEKFORD

COACH T. J. YOUNG

BEVERLEY SHULTZ

CARLYSLE NEFF

CAMPBELL PANCAKE

ALICIA KIVLIGHAN

HOWARD GRIM

The Monogram Club

T. J. YOUNG

Athletic Director

"Blunder" Young came to us at the beginning of the year, leaving as his Alma Mater one of the best schools in the United States, William and Mary, where he made an admirable record in athletics. Blunder has proved to be one of the best coaches Lee High has ever had. With nothing except a handful of green material with which to work, he turned out a "pigskin" team that lost but one game. He has also shown much ability in coaching basketball and baseball. We hope to have him again next year.

MALCOLM WELLER

Captain Football, Fullback; Baseball, Third Base.

Ladies and gentlemen, we are exceedingly grateful to be able to introduce to you Mr. Malcolm Weller. But "Bus" needs no introduction to the students of Lee High. This worthy leader of the "pigskin" led his warriors through a successful season. When "Male's" name is mentioned we always think of a beautiful specimen of manhood charging through some opponent's line for a long gain—or—we see him on the diamond, "soeking the old apple" for a safety. In either case "Bus" is superb. Here's to your success, "Bus," may you succeed as well in life as you have in athletics.

ATWELL HAINES

*Captain Basketball, Forward; Captain Baseball, Left Field;
Assistant Captain Football, Quarterback.*

Ikey Haines, the most conspicuous character in Lee athletics, is now about to appear on the screen. He was seen on the gridiron last fall, generaling the eleven with the headwork of a veteran, and was in the limelight in basketball. When "Ikey" shoots the baleony is speechless—breathless—until the old ball strips the net, and then his name is on the tongue of every loyal baeker of Lee High. To cap the climax of his high school career he answered the diamond call this spring, and was made captain of the nine. The students of Lee wish you "Godspeed" in your college journey, Atwell, but your absence will be keenly felt when the roll of athletics is called in '27.

MARVIN B. ARMSTRONG

Captain-elect Football, Halfback; Basketball, Guard.

"Give the ball to Bill." This is the ery that is heard when we are in desperate need of a gain. When "Bill" was given the ball he upheld his name of being one of the hardest driving backs Lee has ever turned out. Bill not only had a hard drive, but he put everything he had in the game. He loved the game and always played for the good of his school. But to spread it on about Bill's football ability and neglect his basketball career would be unfair, for Bill was a player of "no mean caliber." We feel sure that we have made a fine choice in electing Bill to fill the football captaincy in '27.

ALDON STOGDALE

Football, End; Captain-elect Basketball, Guard.

Another captain-elect, and one who plays the game in such a way that we feel proud to be able to bestow such an honor upon him.

We first see Shorty running down under a punt, nailing some opponent halfback in his tracks. He next appeared on the court, where he was an exceptional guard, one that would do credit to any high school team in the State. "Shorty" is certainly a wonderful athlete, and we rejoice in having him back in our fold next year.

JOHN WHITE

Football, Center; Basketball, Center; Baseball, Centerfield.

Gentle readers, it seems like a coincidence that we should have a man who plays center in the three major sports. White certainly delivers the goods in his center positions. At football he is a wizard, he is a marvel on the court. On the diamond he plays with an accuracy that makes him one of the mainstays of the team. In football he played a center that easily made him the best among the Shenandoah Valley high schools. In basketball he was one of the most accurate shots of the team, and was second high score man of the season. In baseball his specialty is snagging flies, although he wields a "mean club." White, your absence will be greatly felt next year; may you serve another school as well as you have ours.

FRANCIS LINEWEAVER

Football, Tackle and Halfback; Basketball, Guard and Forward; Baseball, Third Base.

Besides being one of the most versatile of Lee Athletes, "Fats" is a "jolly good fellow" in all sports. Whether on the gridiron, the court, or on the diamond, he rates with the best. In football, "Fats" played stellar ball, which placed him among the best in the Valley. In basketball, besides being a superb guard, he shot with a skill that made him third high-score man of the season. This being "Fats'" first year on the varsity, we cannot vouch for his career as a diamond hero, but we feel sure that he will be no disappointment on the hot corner. We are glad to say that he will be with us again next year.

MAXWELL GOODLOE

Football, End; Baseball, Rightfield.

Although Max is light, he had the fighting spirit that made him a football wonder. When a runner came around Max's end he was as good as gone, for he seldom missed a tackle. On the diamond he excels, playing his field position in fine style. He has a keen eye, and when a safety is needed Max may be depended on to deliver the goods. In conclusion, we should like to remind our readers that his only weakness is a certain girls' school in his old home town. We are glad that he will return next year.

BEVERLEY SHULTZ

Basketball, Forward; Baseball, Pitcher.

Clap hands, here comes "Nat"! The big utter and beg man of Lee High, Nat Shultz, the unrivaled manager of basketball, will now take one of his long shots, and he will pot it, too, that's one of his bad habits, taking long shots—and making them! As a manager, we found Nat reliable and serviceable—as a forward, we could not have made the record that we did, without his long shots and general encouragement to the team as a whole. We are grateful that Nat is not leaving us this year, and will probably be one of our best for the next year's sports. We wish to thank him for this year's athletic interest, and we sincerely hope that his fondness for a certain young lady whom we all know, will not cause his interest to ebb and drag for our coming athletic events.—STANLEY ADAMS.

CLARK KIRBY

Football, Halfback; Baseball, Utility Infield.

When football came, who should be with the first to answer but Clark. Not only did he answer the call, but he made an admirable halfback, working hard throughout the season, making the first letter of his high school career. But football is not Kirby's only specialty, as he is also a performer on the diamond, and we feel sure that he will again make a monogram before he leaves us in June. As we bid him goodbye, let us say that he will be missed not only on the sporting side of Lee life, but also on the academic, as he is a brilliant student.

PALMER STOVER

Football, Tackle.

You have at last come to one of the most beautiful pages in our year book. You are now going to read of the "Lochinvar" of Lee High. But let us now stop praising the beautiful side of Palmer and study him as a football hero. But to only call him a hero is insufficient praise for Palmer, for as a football player he is really out of the ordinary. When a goal was needed, Palmer would always open up the hole for his team-mates to charge through. In saying goodbye to him let us say that his absence will be keenly felt when the '27 football call comes.

JOHN BUTLER

Football, Tackle.

Without a doubt John is the best one season production that Lee has ever had. Playing his first year on the varsity, he made a record that would do credit to a veteran of three or four seasons. On the defense John was unexcelled, and on the offense he was a tower of strength. It is our good fortune to have him with us again next year.

ROBERT LINEWEAVER

Football, Halfback.

"Radio Bob" certainly did his stuff with the old pigskin, pulling the "Red Grange" trick in almost every game. Bob got off with a bad start, being injured during the first week of practice, but he soon made up for lost time, and by the first game he was going strong, pulling the hero act, in grabbing a loose runner just in time to save his team from defeat. We feel sure that "Bob" will be an outstanding player next year, and are exceedingly glad to have him with us.

CAMPBELL PANCAKE

Football, Guard.

What a pity Campbell is going to leave us! Who can we get to fill that guard that he held down without a mistake? But all good things must have a finish. If we cannot impress it on you that "Sheik" was a real guard, ask those who played against him. Not only did he play the grid game, but he also was a valuable man in basketball, ranking high as guard, although he did not win a monogram.

HORACE JORDAN

Football, End.

"Honest and Truly," fair readers, you are now hearing about one of the flashiest ends Lee High has ever turned out. He played a brand of ball that would do justice to any high school in the Valley. Jordan certainly knew how to hold down the end position, but if you want proof, ask the Handley backfield. Jordan also is quite a star on the court and diamond, but he left school too soon to win achievement on these.

MARSHALL BAYLOR

Football, Guard.

Another Freshman who performed wonders on the gridiron is "Bill." He played guard with no mean ability. "Bill" is heavy, and played with a fighting spirit that placed him with the best in Lee High. We are glad to have him with us next year.

JAMES CERANTONIO

Football, Guard.

Playing with a "never-die-spirit," "Jimmy" rose from a second string man to the varsity squad, and before the end of the season he was with the first eleven. "Jimmy" put everything he had into the game, and sometimes he took out a little more. We feel sure that he will be of valuable assistance in helping to build an admirable machine for the '27 season.

THOMAS LARNER

Football, Guard.

"For the last three or four years Tom had been "going out for football," but due to his lightness and to veteran material he could not quite reach the goal for which he was working. This year, however, Tom stuck it out to the end, and a great many times he rendered valuable service to the eleven. The only thing we have against him is that he is leaving us this year. Good luck to you on the "gridiron" of life, Tom. May you prosper there as well as you have at Lee.

PERCY ROBEY

Baseball, Pitcher.

As this is Robey's first year in Lee High, we cannot say much as to his ability as an athlete, but we can say he has the brightest prospects of any pitcher who ever twirled for the Blue and White. Who will ever forget that beautiful day in Harrisonburg when as a relief he took up the work on the mound and turned back the Harrisonburg batters, allowing no hits or runs for five innings? We are glad, not only for the school's sake but for his, that he is a freshman, because we feel that in a few years he will be a "wonder."

KENNETH BRADFORD

Baseball, Second Base.

"Squirt" hails from Woodbury Forest. We received him with a glad hand and gave him a hearty welcome to the "Keystone" sack. When it comes to baseball he is one of Lee's foremost products. Every pitcher hates to see "Squirt" come to bat, for he is a demon to pitch to, not only because he's difficult for the pitcher to handle, but when one comes over he knows how to "lay on it." We certainly hold him up as one of our foremost athletes and will be exceedingly glad to have him with us next year.

HOWARD P. GRIM

Manager Football.

Without a doubt "H. P." has the most progressive ways and ideas of any student of Lee. He is always trying to better the conditions of Lee High. As a manager he is hard to beat, for he is always on the job. In Grim we believe we have a man on whom we can rely, and we know that he will always give us his best.

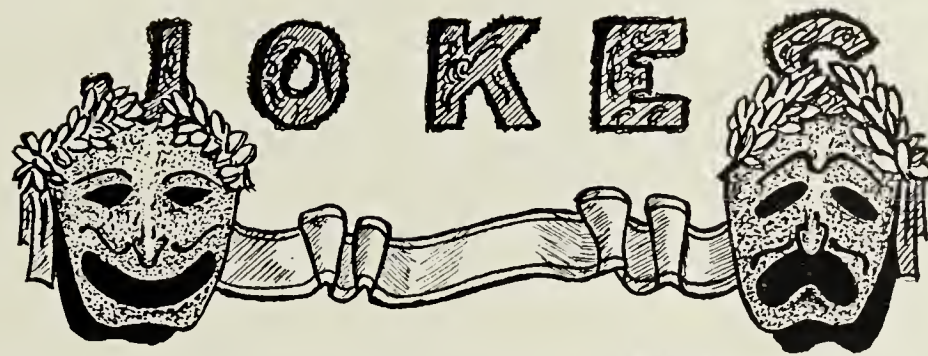
LEONARD GLOVER

Manager Baseball.

Our baseball managership has been through a number of hands this year. The first manager was Marvin Armstrong, who helped arrange the schedule, but resigned before the season started. Carlisle Neff was next elected manager, but due to heavy work he was forced to resign. We next appointed a man who has given us his best. Leonard is certainly an ideal manager, alive and progressive, with a good head for handling difficult situations. We take this opportunity for thanking you, Glover, for your good work.



SCENES IN SHENANDOAH NATIONAL PARK



The modern girl does not want a chaperon; she wants the chap alone.

An apple caused man's first downfall, but the peaches have handled the business since.

"They won't make a bricklayer out of me," said the hen as she shoved the porcelain egg out of her nest.

SO'S YOUR OLD MAN

She: "What was that noise when you came in last night?"

He: "Night falling."

She: "Oh, I thought it was day breaking."

"Gosh, you're small."

"Precious articles always come in small packages, you know."

"Yes, and so does poison."

He: "Can you Charleston?"

She: "No, but I can Philadelphia."

He: "Meaning what?"

She: "I'm a good little quaker."

A handsome chap strode in: "Do you keep automobile accessories here?"

The little bookkeeper smiled her sweetest. "Only me," she replied.

"Mother, what is an angel?"

"An angel is one that flies."

"Why father says my nurse is an angel."

"Yes, and she is going to fly too."

"Hello."

"Hello, this Mary?"

"Yes."

"Do you still love me?"

"Yes, who is it?"

“So the divorce brought only temporary relief?”
“Yes, the poor simp married again.”

’Tis sweet to love,
But oh, how bitter
To love a girl,
And then not gitter.
—*Yellow Jacket.*

“Hey fellah, why don't you get a hair cut?”
“I'm afraid 'twould make me light headed.”

First Child (as locomotive comes to crossing): “I wonder what makes that engine whistle.”

Second Ditto: “If your insides were as hot as its are, you'd whistle too.”
—*Harvard Lampoon.*

“Thanks for the kiss.”
“Don't mention it.”

Sheik: “Does your father believe in freedom of the press?”
She: “No, but he's not looking.”

“Do you smoke tobacco in your pipe?”
“Jever hear of anyone smoking anything but tobacco?”
“Well I have an uncle that smokes hams.”
—*Notre Dame Juggler.*

“That girl's a dizz.”
“She's my sister!”
“I repeat, she's a whiz.”
—*Notre Dame Juggler.*

Girl in box office: “Sorry, sir; I have nothing left but two single seats in different parts of the house.”

Customer: “Good! I'll take 'em! I'm going to bring my wife.”

“What is salesmanship?”
“Salesmanship is the ability to sell a widow a two-trousers suit to bury her husband in.”

Two colored gentlemen who had reduced the population of a farmer's hen roost were making a get-away. “Laws, Mose,” gasped Sam, “why you s'pose dem flies follows us so close?”

“Keep gallopin', nigger,” said Mose, “them ain't flies. Them's buckshot!”

Opportunity knocks but once. Install one of our electric door-bells now!

“I'll never get over this,” said the chicken as she ambled up to the ostrich egg.

"You are my treasure! Your lips are rubies, your teeth are pearls, your eyes are diamonds—"

"Hush! You know how searching the tax people are nowadays!"

A back fence is the shortest distance between two gossips.

He: "I trust I make myself plain?"

She: "You don't have to. Nature attended to that for you."

—*Selected.*

Mut: "This match won't light."

Nut: "That's funny. It lit all right a minute ago."

—*Red and Black.*

"So you are in a new business."

"Yes, I'm making a face powder that can't be kissed off."

"You don't say? Do you need any help in the testing room?"

—*Smiles and Giggles.*

Nervous but Eligible Bachelor: "Marriage is a lottery."

Sweet Young Thing: "Oh, Horace, I love a gamble."

Jack: "Do you believe in hypnotism?"

May: "I must. I feel that you are about to kiss me, and I'm powerless to resist."

—*San Diego Sun.*

"I like your cheek," said the indignant maiden to the youth who kissed her.

"And I like yours," said he, as he kissed her again.

"Are the pictures in the Rogues Gallery framed?"

"Yes, in guilt."

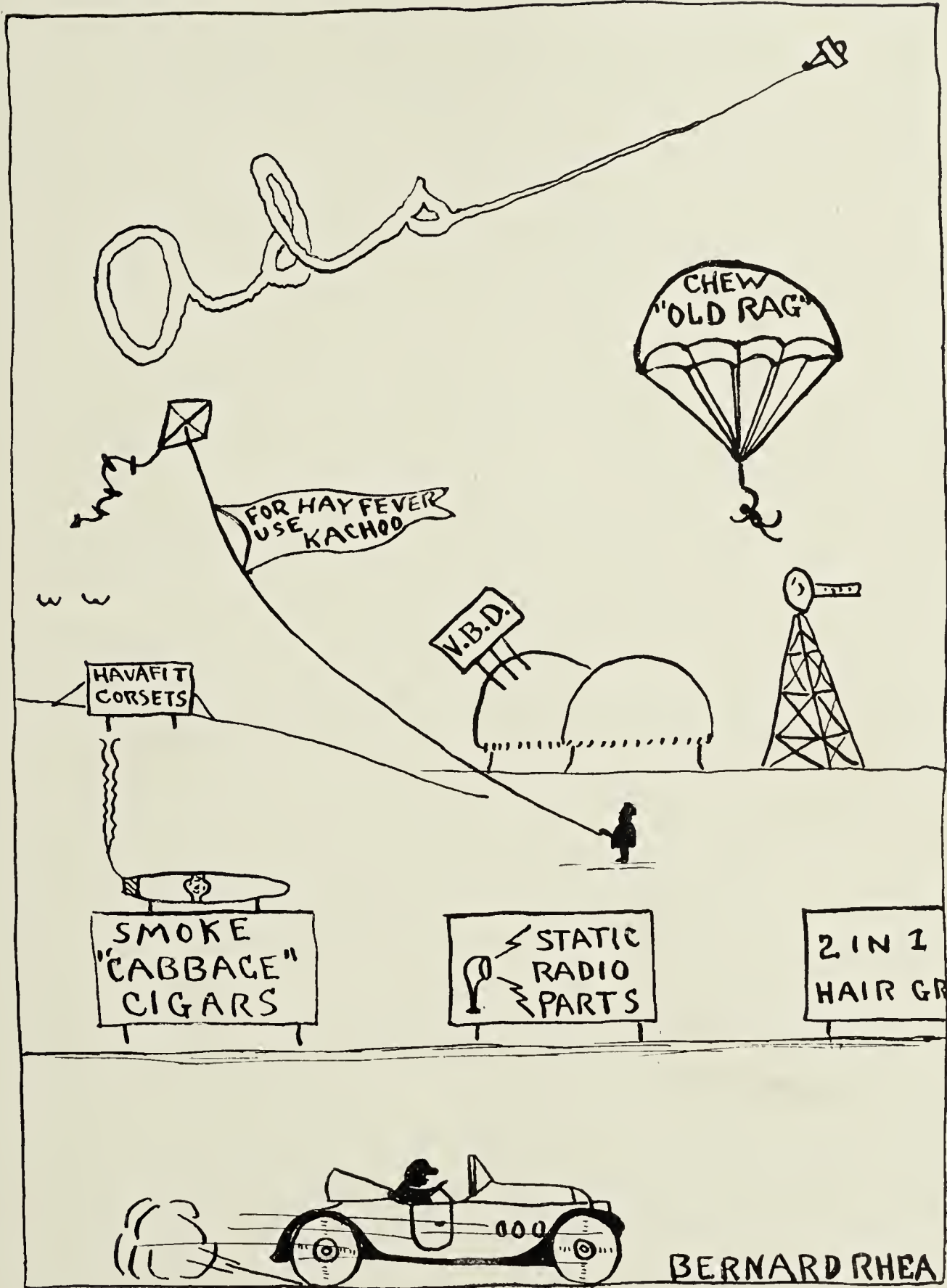


L'Envoi

We've worked on this annual night and day
To give you what you want ;
We've showed you how we work and play
With a spirit that nothing can daunt.

We've striven to make this book recall,
And to truthfully portray
The joys and tears of our high school years,
And we hope it does all that we say.

So before you pass judgment on us, my friend,
Read all that we've written here,
And remember the school where we've had to spend
This, our SENIOR YEAR.



BERNARD RHEA

Mary Baldwin College
and
Mary Baldwin Seminary
ESTABLISHED IN 1842

For Young Ladies . . . Staunton, Virginia

Located in the beautiful and historic Shenandoah Valley of Virginia. Unsurpassed climate, handsome buildings, and modern appointments.

COURSES: Collegiate, 4 years, A. B. Degree; Preparatory, 4 years. Music, Art, Expression, Domestic Science, and Athletics—Gymnasium and Field. Small classes and thorough work. Send for catalogue.

Business Training

BOOKKEEPING PENMANSHIP
SHORTHAND TYPEWRITING

ASK FOR CATALOGUE

Templeton Business School
STAUNTON, VIRGINIA

Dunsmore Business College

Has Prepared 80 Per Cent of Staunton's

Most SUCCESSFUL Business Men

Dunsmore Business College

Can Do as Much for YOU if YOU

Will Only Give US a Chance

"YOU OWE IT TO YOURSELF"

"Little girl, that's a very nice suit your father is wearing, isn't it?"

"Yes, and I think that the man he bought it of is sorry he sold it. He's always calling."

—*Wisconsin Octopus.*

Son: "What's a genius, pop?"

Pop: "A genius is a man who can rewrite a traveling salesman's joke and get it accepted by *The Ladies Home Journal.*"

THE FOUNTAIN OF GOOD THINGS

—Where Boys and Girls MEET, GREET and TREAT—
Fountain Pens, Stationery, Almond Roca and
Belle Mead Sweets Candies

—*This is YOUR Headquarters—*

KENNEDY & ELLINGER

THE HOME LIKE DRUG STORE

STRAND THEATRE

The BEST Procurable in the Field of Entertainment

—POPULAR PRICES—

We STRIVE to PLEASE the PUBLIC

L. G. Balfour Company

CLASS RINGS

CLUB PINS

GOLD FOOTBALLS

FRATERNITY PINS

GOLD BASKETBALLS

GOLD BASEBALLS

INVITATIONS

220 American National Bank Building
Richmond Virginia

Skill Craft Clothes

are made in our own factories—we sell direct to the
consumer

NO MIDDLEMAN'S PROFIT TO PAY

A complete line of Men's, Young Men's and Boys'
Clothing to select from at all times.

Skill Craft Clothes Shop

M. J. RUNCLE, Manager

9 South Augusta Street

Staunton, Virginia

"If you put two and two together, what do you get?"

"Four."

"Nope; a kiss."

—*Wisconsin Octopus.*

"Which would you rather be, Shakespeare or Edison?"

"Edison!"

"Why?"

"Cause he ain't dead."

—*Northwestern Purple Parrot.*

B. & W. BOOK CO.

Picture Frame Makers

Engravers

Stationers

Office and School Supplies

Phone 1001 18 E. Main St.

JOHN FALLON

Wholesale and Retail

FLORIST

Cut Flower Work of

Every Description

Staunton - - - Virginia

You Always Get the BEST at

Barth, Weinberg & Co.

—Staunton's Leading Clothiers—

Buy Your SHOES From US and Get the New "Collegiate"
Styles

THE SMART SHOP

Augusta Street—Next to Augusta National Bank

THE NEXT STEP

"I told him I didn't want to see him any more!"

"What did he do then?"

"Turned the light out!"

—*Sniper.*

"Is your brother really such a slow young man?"

"Slow! Why, if he takes a girl on a railroad excursion she has to tell him every time they are coming to a tunnel."

We Buy all Kinds of

Waste Materials

KLOTZ BROS.

FOR A THOROUGH COURSE

OF COMPREHENSIVE

STUDY

MANCH SCHOOL

OF MUSIC

HEMP AND WALTER

High School's Friends

This is a Home Institution

which encourages local industry. Its interest, first and last, is in the GROWTH and DEVELOPMENT of Staunton and Augusta County.

The PLANTERS BANK,

INCORPORATED
STAUNTON—MT. SOLON

BRYAN'S DEPARTMENT STORE

POLL PARROT SHOES FOR BOYS AND GIRLS
TOM SAWYER SHIRTS AND BLOUSES FOR BOYS
GEO. P. IDE COLLARS—BEST BY LAUNDRY TEST
RED CROSS SHOES FOR YOUNG LADIES AND GROWN UPS
THIS STORE SAVES YOU MONEY ON YOUR PURCHASES

BRYAN'S DEPARTMENT STORE

BEVERLEY BOOK CO.	SERVICE	QUALITY
BOOKS	FRANCIS N. MORAN	
AND	Phone 514	
STATIONERY	PLUMBING	HEATING
Masonic Temple	Salesroom	
Staunton - - Virginia	No. 128 West Main St.	
G. W. KENNARD	COMPLIMENTS	
<i>JEWELRY</i>	H. D. MURRAY	
	INSURANCE	

A. ERSKINE MILLER

LUMBER AND BUILDING MATERIALS OF ALL KINDS

Specialists In

FINE MILLWORK

44 Middlebrook Avenue

Phone—7 6 8

Augusta National Bank

STAUNTON, VIRGINIA

M. KIVLIGHAN President CHARLES M. EAST, Cashier
J. L. WITZ, Vice-President L. B. STEPHENSON, Asst. Cashier
FITZHUGH ELDER, Trust Officer

—Resources Over One and One-Half Million Dollars—
—Three Per Cent. Interest Paid on Savings Account—

WE SOLICIT YOUR BUSINESS, LARGE OR SMALL

CHARLES HOLT, INC.

Always showing new line of Ladies' Ready-to-Wear, Millinery, Dry Goods, Notions, Rugs, and Draperies. An especially extensive line of materials and trimmings for party frocks.

CHARLES HOLT, INC.

Valley Tire & Supply Co.

PARTS AND SUPPLIES

10 S. New Street

Phone 437

Staunton - - - Virginia

J.C. Penney Co.
A NATION-WIDE INSTITUTION - Incorporated
571 DEPARTMENT STORES

11 South Augusta Street

Staunton - - Virginia

EVERYTHING TO WEAR
FOR ALL THE FAMILY
Dry Goods, Ready-to-Wear
Clothing, Furnishings,
and Shoes

—Get The PENNEY Habit—

W. J. Perry, *President*

Robert E. Fifer, *Sec.-Treas.*

W. J. Perry Corporation

FIRE, LIFE, AND CASUALTY INSURANCE

Phone 666

Masonic Building, Staunton, Va.

General Agt.: Maryland Casualty Company, Virginia and West Virginia

S. P. JONES

GENERAL CONTRACTOR

I DO ALL KINDS OF PAINTING
INSIDE DECORATING A SPECIALTY

PHONE—604J

COURTESY
EFFICIENCY
AND PRICE

“QUALITY COUNTS”

THOMAS HOGSHEAD

Have You
Subscribed to
The Record

CONDENSED STATEMENT OF

The Staunton National Bank

OF STAUNTON, VA.

June 30, 1925

RESOURCES		LIABILITIES	
Loans and Investments	\$ 765,091.02	Capital Stock	\$ 100,000.00
U. S. Bonds	87,000.00	Surplus and Profits	69,266.14
Furniture and Fixtures	20,628.63	Dividends payable July 1, '25	5,000.00
Cash on hand	\$ 31,812.99	Circulating Notes	81,000.00
Due from Banks	104,212.36	Rediscounts	129,635.00
	136,025.35	Deposits	623,843.86
	<u>1,008,745.00</u>		<u>1,008,745.00</u>

THREE PER CENT INTEREST PAID IN SAVINGS DEPARTMENT

B. E. VAUGHAN, President,
E. W. RANDOLPH, Cashier.

J. N. McFARLAND, Vice-President,
FRED M. FIFER, Assistant Cashier.

H. L. LANG & CO.

JEWELERS

Special Attention Given to Class Rings, Pins, and Invitations
STAUNTON, VIRGINIA

Established 1871

TIMBERLAKE DRY GOODS COMPANY
STAUNTON'S GREATEST STORE

Dry Goods, Millinery and Ready-to-Wear
STAUNTON, VA.

WISE DOC

Mrs. Gossip: "Oh doctor! I feel so ill!"
Doctor: "Your temperature is normal. Your pulse is exact."
"Well, Doctor, is my tongue coated?"
"No, madame, one never finds moss on a racetrack."

WORTHINGTON HARDWARE COMPANY

Incorporated

JOBBERS OF HARDWARE

Clarke Worthington J. L. Goodloe I. S. McNeill
J. O. Snyder J. M. Bratton

F. C. HAMER & CO.

REAL ESTATE AND INSURANCE

24 South Augusta Street Staunton, Virginia

H O G E & M C C H E S N E Y

ATLAS INSURANCE COMPANY

Represents the Largest Fire Insurance Company in the World

Staunton - - - - - Virginia

Established 1870
S. M. WILKES & CO.
Mrs. Joseph Poole Allen, Owner
Joseph Poole Allen, Manager
Funeral Directors—Florists
Ambulance—Chapel
Phones: Day, 659; Night, 329
114-116-118 West Beverley
Staunton - - - Virginia

ECONOMOS BROS.
HAT WORKS
18 W. Main St.—Staunton, Va.
Send us your old one. We return
it new SAME DAY if requested.
Work done by EXPERTS in
Cleaning, Shaping and Blocking.
SUITS CLEANED AND
PRESSED

YELLOW **We Go Everywhere** **YELLOW**
YELLOW CAB COMPANY
—PHONE 730—
J. EARL JONES, Proprietor
FIVE and SEVEN Passenger Cars
SERVICE DAY AND NIGHT
14 North New Street Staunton, Virginia

Farmers & Merchants Bank
Resources Over———\$1,000,000.00
COMMERCIAL ACCOUNTS
SAVINGS
SAFE DEPOSIT BOXES
TRUSTS

Augusta Furniture Co.
INCORPORATED
Furniture, Carpets, Stoves, and House Furnishing Goods
COLUMBIA GRAFONOLAS AND RECORDS
Nos. 107 to 111 West Main Street

WHY TALK?

It wouldn't make any difference how strongly we "put it"—you want proof anyway, so come to our well-appointed Jewelry Store and look over the stock of Handsome Bargains in this line. Superb Jewelry unequalled for money values on display in all of the LATE PATTERNS.

D. L. SWITZER, JEWELER
No. 19 East Beverley Street Staunton, Va.

HERFF-JONES CO.

INCORPORATED

MANUFACTURING JEWELERS *and* STATIONERS

INDIANAPOLIS, INDIANA

"We Furnished The Senior Class Pins This Year"

"What are you cutting out of the paper?"

"About a man getting a divorce because his wife went through his pockets."

"What are you going to do with it?"

"Put it in my pocket."

—Integral.

Old Sailor: "Yes, mum, that's a man-o'-war."

Lady: "How interesting! And what is that little one just in front?"

"Oh, that's just a tug."

"Oh, yes, of course, tug-of-war; I've heard of them."

—Bucknell Bell Hop.

Smith Fuel & Ice Co.

COAL, WOOD, AND ICE

—302 SOUTH CHURCH STREET—

THE Y. M. C. A.
IS READY TO HELP
ANY FELLOW IN
ANY WAY
IT CAN

WHERE THE MAN
WHO KNOWS
BUYS HIS
MEALS
CHRIS' RESTAURANT

"Are you there?"
"Who are you, please?"
"Watt."
"What's your name?"
"Watt's my name."
"Yeh, what's your name?"
"My name is John Watt."
"John what?"
"Yes."
"I'll be around to see you this afternoon."
"All right. Are you Jones?"
"No. I'm Knott."
"Will you tell me your name then?"
"Will Knott."
"Why not?"
"My name is Knott."
"Not what?"

Brr, clank, crash, stars, etcetera and so forth.

—*Flamingo.*

THE PINES COFFEE SHOPPE

THE HOME OF GOOD THINGS TO EAT

Tourists Lunches a Specialty

TELEPHONE FIVE HUNDRED AND SIXTY-TWO

107 East Main Street

Staunton, Virginia

COMPLIMENTS

OF

A FRIEND

FOR GOOD LIFE AND
ENDOWMENT
INSURANCE

SEE

CURTIS P. BOWMAN

LIFE INS. CO. OF VIRGINIA
Witz Bldg. Staunton, Va.

ASK DAD; HE KNOWS

“All the world loves a lover, you know,” said the young man.

“You’ll find out your mistake when you speak to father,” replied the sweet young thing.

—*Humorist.*

SPIT AWAY

“I certainly do miss that cuspidor,”
Said papa dear one day;
But mama said: “You did before,
That’s why it’s gone away.”

SHE WON’T BELIEVE IT

Tell her stories, tell her lies,
Tell her of her sapphire eyes,
Tell her anything, flaming youth,
But never tell a girl the truth.

—*Wisconsin Octopus.*

ONE VALUABLE LESSON
“LEE HIGH” SCHOLARS
SHOULD LEARN IS
ALWAYS DEAL
WITH

A. LEE KNOWLES, INC.

—REAL ESTATE and INSURANCE—

REAL ESTATE
FIRE INSURANCE
AND SURETY BONDS
All kinds investment securities
bought and sold
Loans made on Real Estate
Security

J. EARL HOOVER

Witz Building Staunton, Va.

VERY RUDE

Judge: Come, now, tell me in your own words just how this riot started at your house.

Prisoner: "Well, yer honor, when I come home from work last night this bird was sittin' in the parlor with my wife in 'is lap, and as I was hangin' up me hat he up and knocks out 'is pipe on a new rug that I paid four dollars for only last Saturday."

"Listen heah, cullud man. De fust time mah family moved into yo house we went right through de floor and fell into de cellar."

"Well, ah'm sorry, brothuh, ah can rent you a place to live in, but ah can't undertake to suppoht you an' yo family."

—*Harvard Lampoon.*

Hotel Stonewall Jackson

STAUNTON, VIRGINIA

FIREPROOF

EUROPEAN PLAN



MOST DISTINCTIVE HOTEL IN STATE OF
VIRGINIA

A. T. MOORE, PRESIDENT

—IN THE BEAUTIFUL SHENANDOAH VALLEY—

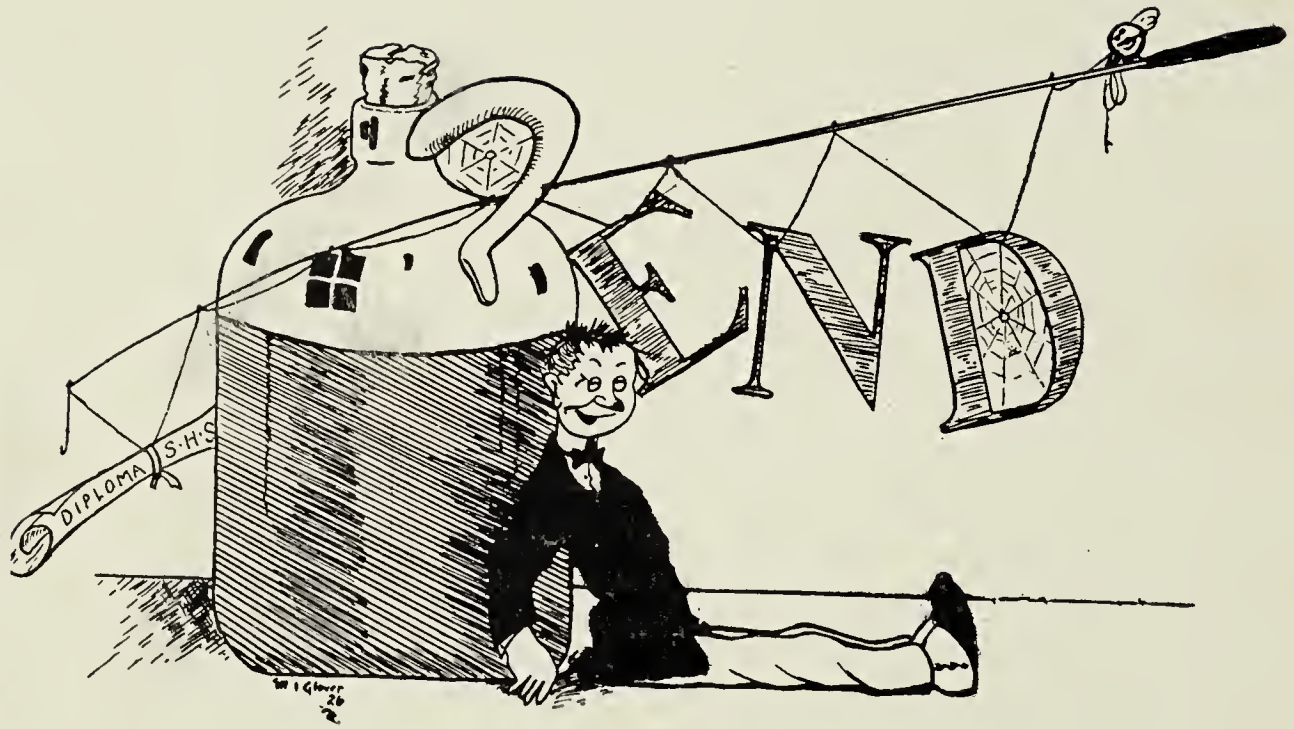
HIGH School and College Annuals have come to be recognized as an institution. Year by year they are growing in importance and in number. They are growing, too, in beauty and character, so that many high school annuals now excel the books issued from colleges a few years ago. In this advancement we have had no small part.

For more than fourteen years we have been helping create representative annuals for schools throughout Virginia, and have won a position of recognized leadership among the printers of annuals. This is one of the many printed by us.

Not content to rest on laurels won, we have worked out plans to make our service in the future more helpful than ever. Editors, business managers, and faculty advisers are invited to write and give us an opportunity to explain how *we can help them publish the best annual they have ever had.*



The McCLURE COMPANY, Inc.
Printers : : Binders : : Engravers
NINETEEN WEST FREDERICK STREET
STAUNTON : : : VIRGINIA



Autographs

Press of
The McClure Company, Inc.
Staunton, Virginia



11
12

Staunton Public Library



3999990440723G